



Groundwater Management in Colusa County

Mary Fahey

Water Resources Coordinator

County of Colusa

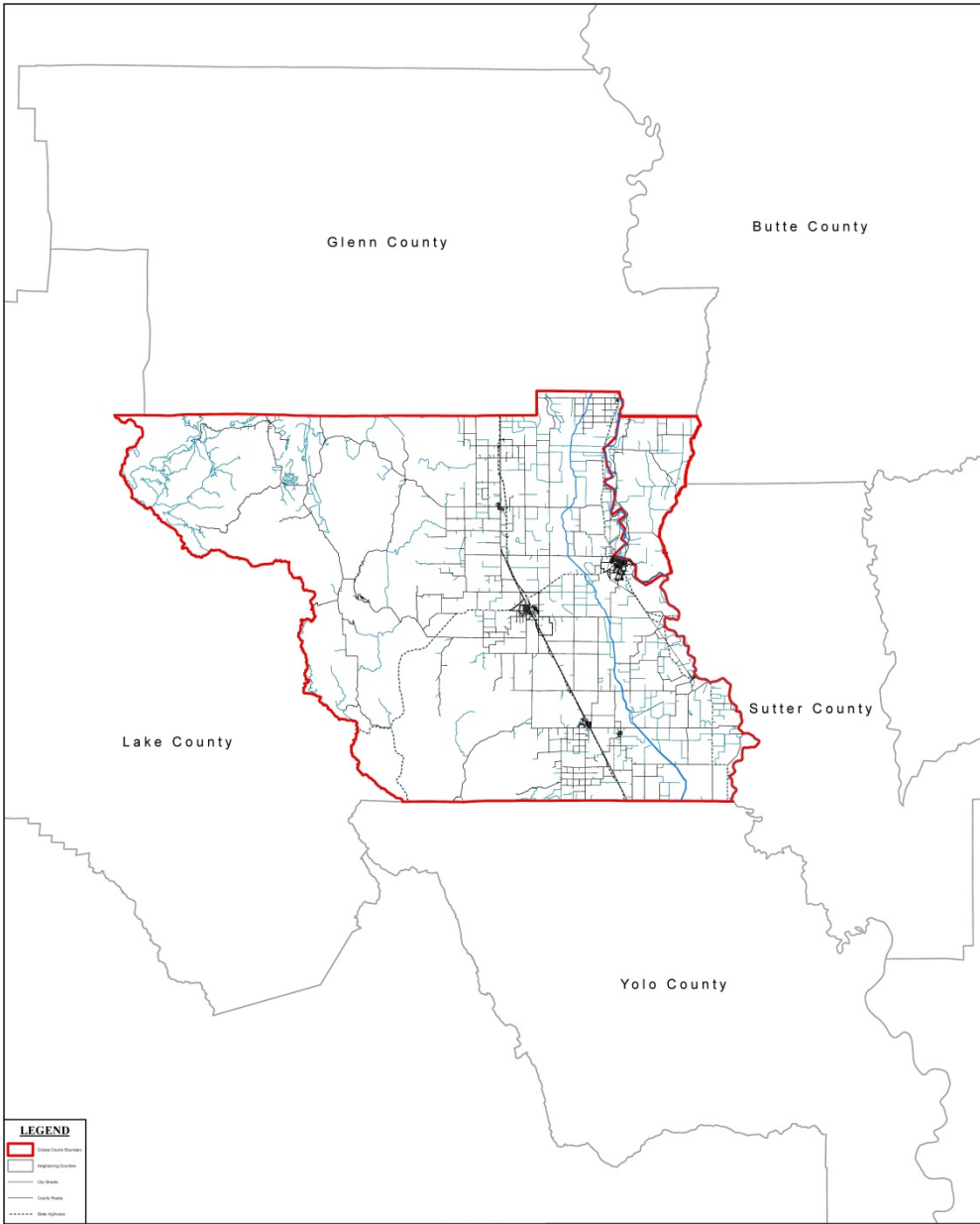
Colusa County Department of Agriculture

Water Education Foundation Groundwater Tour

October 5, 2016

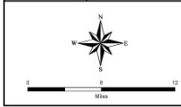
Groundwater Management in Colusa County

- Pre-SGMA Groundwater Management
- Current Groundwater Management
- GSA Formation Process in Colusa County



LEGEND

- County Boundaries
- Irrigation Canals
- City Streets
- County Roads
- State Highways

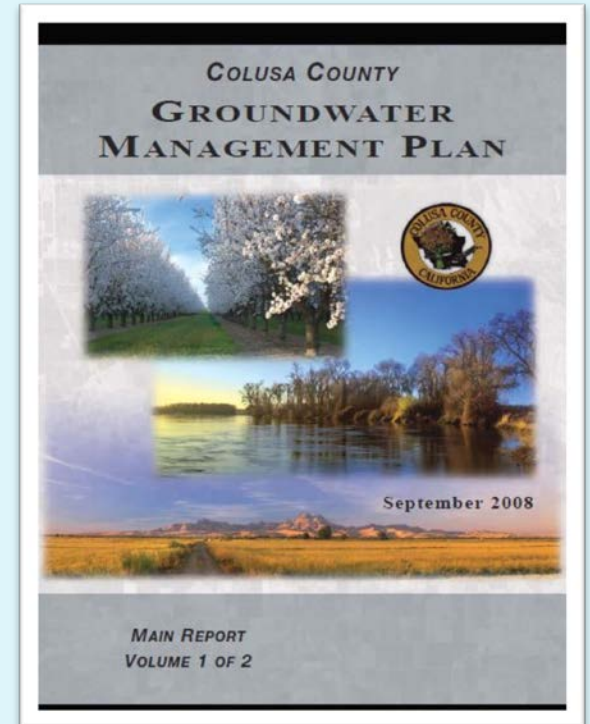


County of Colusa State of California		WATER RESOURCES	
COLUSA COUNTY		1	
DATE	DRAWN	REVISIONS	APPROVED
4/18/2019	S/12/15	-	-

Pre-SGMA Groundwater Management

Colusa County Groundwater Management Plan

- AB 3030 Groundwater Management Plan adopted in 2008
- Implementation delayed until 2013 due to limited County resources
- Half-time staff subcontracted through RCD
- December, 2014 - County put in place a Water Resources Department, one full time staff
 - SGMA and other water-related tasks



Current Groundwater Management

Programs and Studies

Monitoring and Data Management Program

Prop. 1 Counties with Stressed Basins grant funding, \$250,000

- SGMA compliant monitoring program that addresses 5 of 6 sustainability indicators:
 - Groundwater levels
 - Groundwater quality
 - Groundwater storage
 - Land subsidence
 - Groundwater/surface water interaction
 - (Seawater intrusion is the 6th, we do not have to address this)
- SGMA compliant data management program, user-friendly, easily shared

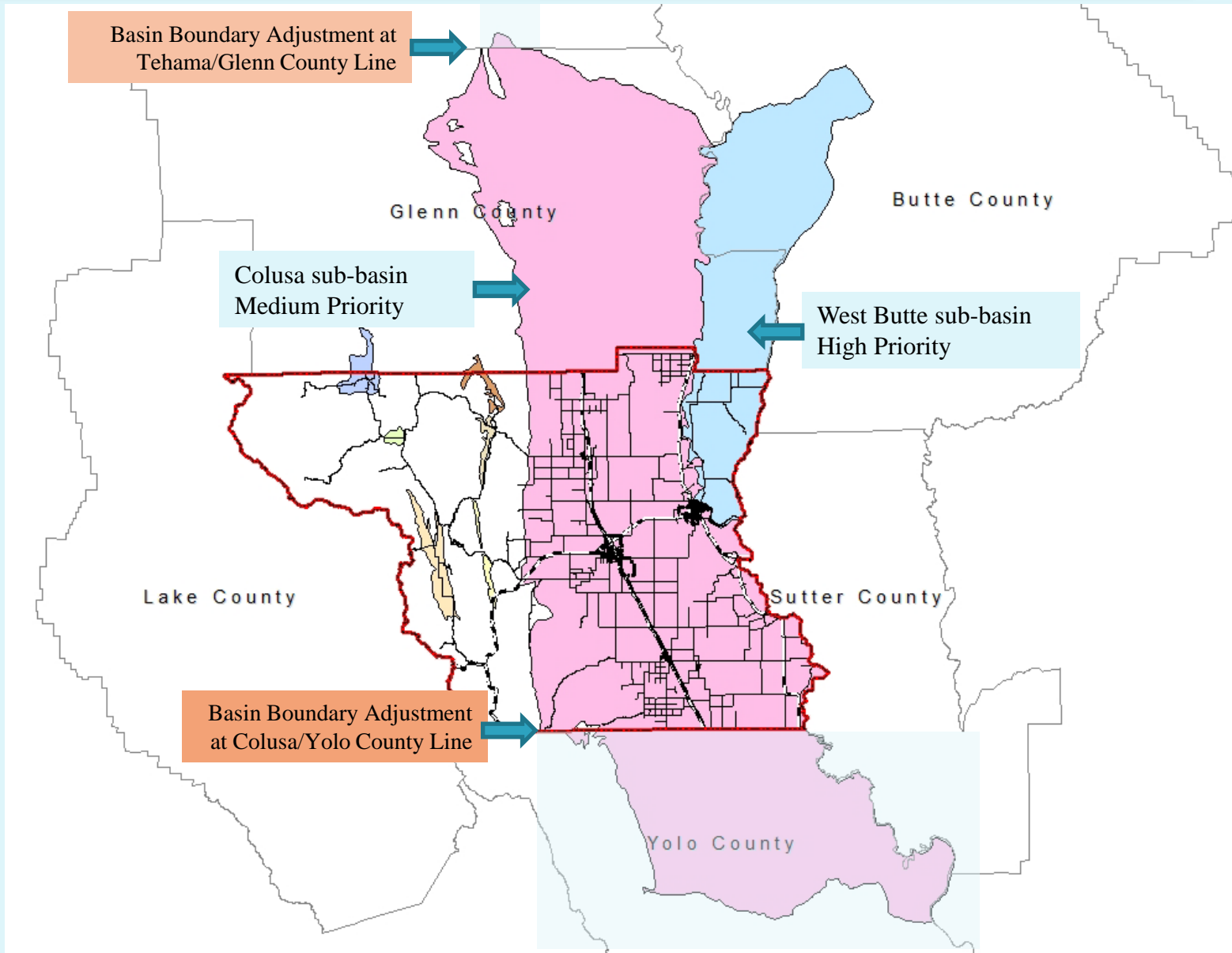
We've come a long way in a few years, but many data gaps remain

Near future data needs for SGMA:

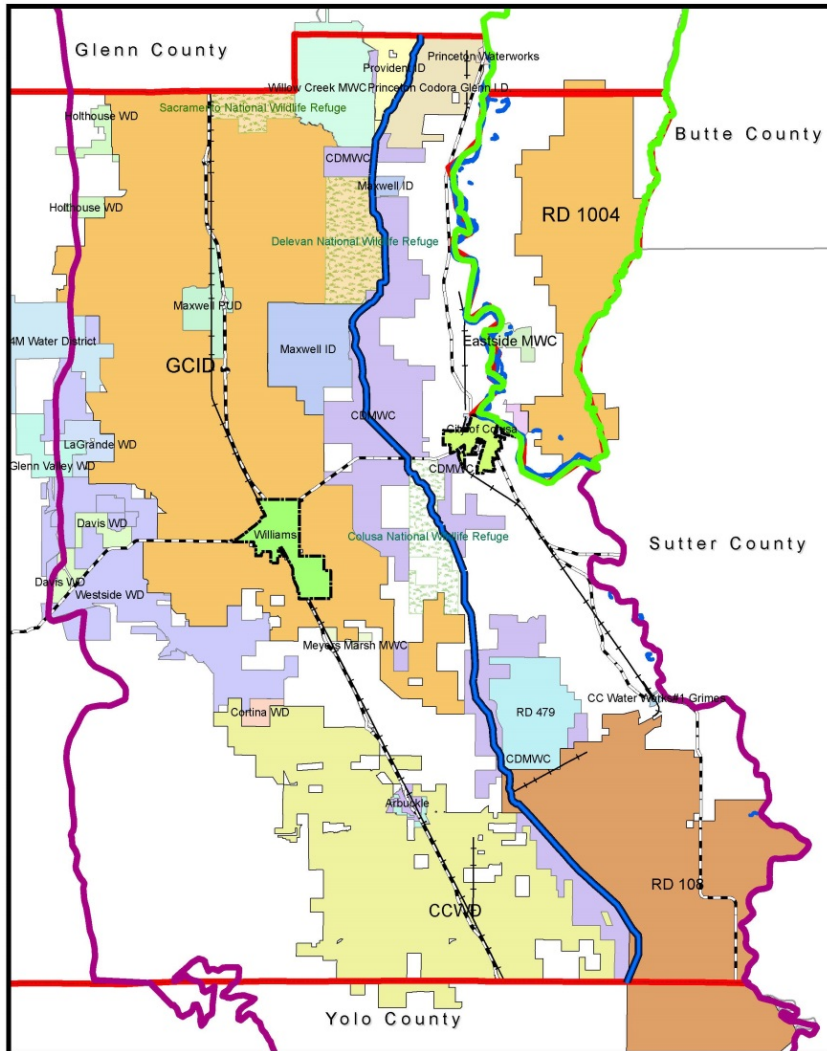
- Water balance
- Groundwater model

Shared efforts with other agencies

GSA Formation Process in Colusa County



GSA Formation Process in Colusa County



GSA-eligible Agencies - 28

- 16 Water Districts
- 4 Reclamation Districts
- 4 Public Water Supply Districts
- 2 Cities
- County
- Resource Conservation District

Others

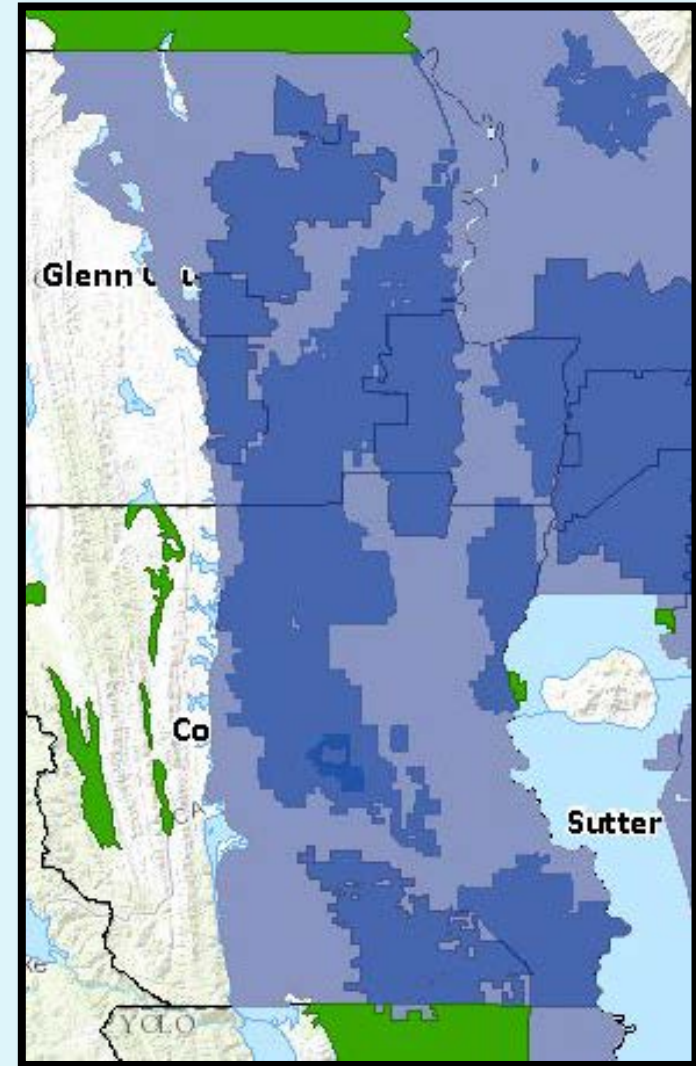
- 5 Mutual Water Companies
- *50,000+ Acres of “White Areas” (Private Pumpers)

Tribes and Federal (exempt)

- 2 Tribes
- 3 Federal Wildlife Refuge Complexes
- US Forest Service
- California Fish and Wildlife Service

GSA Formation Process in Colusa County

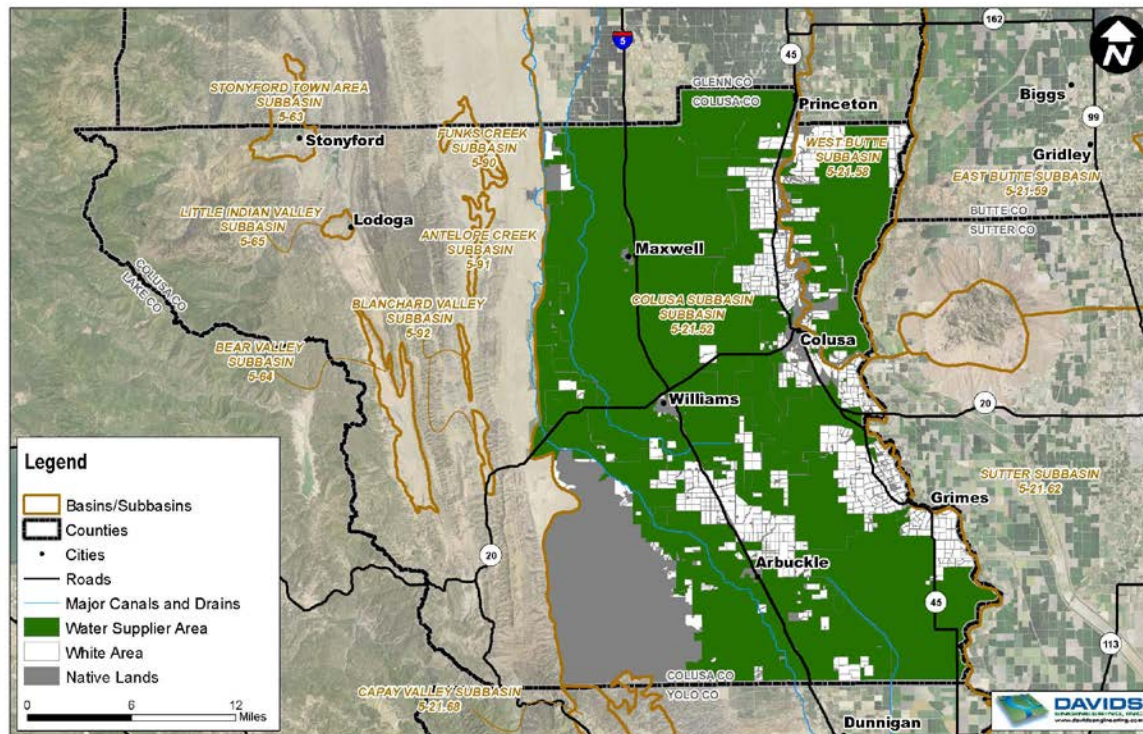
- Planning within County boundaries; Coordinating with surrounding counties (Glenn, Butte, Yolo)
- Facilitation Support Services provided by DWR
 - Sacramento State, Center For Collaborative Policy
 - All meetings are open to the public; information posted on the County Water Resources website at: countyofcolusa.org
- Overlapping GSAs
 - 1 City and 5 water agencies filed
 - 90-day rule, rush to file
 - Overlaps must be resolved by June 30, 2017
- Colusa County overlaps will be resolved when final governance is decided, before June 30



GSA Formation Process in Colusa County

“White Areas”

- Per SGMA, Counties are responsible for the white areas
- Per SGMA, individual landowners/private citizens are NOT eligible to be a GSA
- **Private Pumper** = groundwater user outside of any water agency boundaries
 - Agricultural water users
 - 100% dependent on groundwater to grow their crops
 - They have a large stake in SGMA, but are not eligible to participate in governance



GSA Formation Process in Colusa County

Private Pumper Advisory Committee (PPAC)

- The PPAC was formed to ensure that private pumpers have a role in SGMA planning and implementation
- Colusa County Supervisors recognized the critical role of the private pumpers
- The Colusa County PPAC was originally developed as an Advisory Committee to the County, but they have advocated for representation on a governing board
- Colusa County discovered that a non-eligible entity can be appointed to a JPA Board with equal voting rights (but there are caveats)
 - Sacramento Groundwater Authority model
 - JPA Signatories can appoint a private entity
 - The Appointee is never independent of the Appointer
 - The Appointee gets the authorities that are given to them by the Appointer
 - The Appointee can be rescinded by the Appointer at any time
- Since Colusa County formed its PPAC, several other counties are developing similar committees

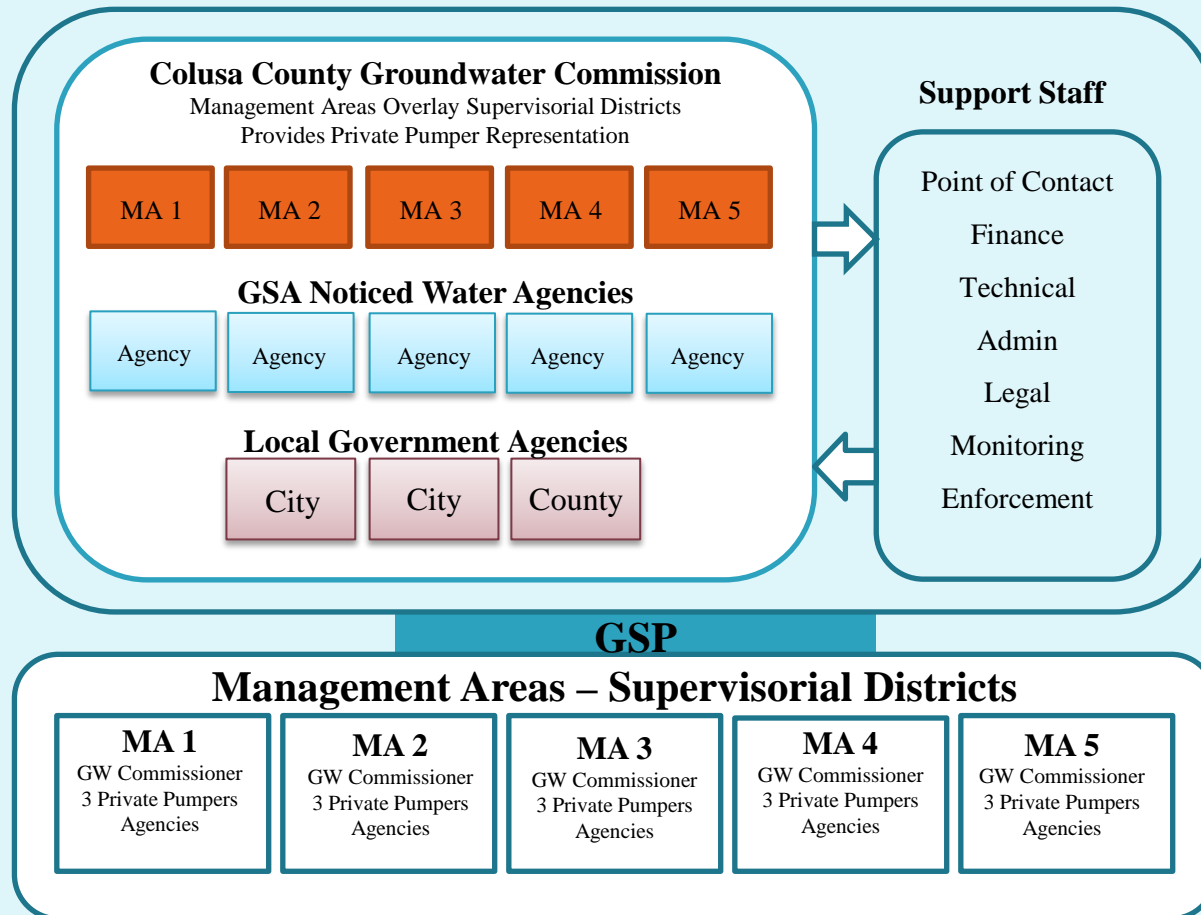
PPACs are not part of the GSP Regulations



GSA Formation Process in Colusa County

Current Model (this is a work in progress):

- Multi-agency GSA
- Inclusive of interested parties
- Covers County portion of basins
- Private Pumper representation



Colusa County governance planning approach is collaborative and inclusive of agencies and private pumpers

GSA Formation Process in Colusa County

Key questions, concerns, challenges


- Funding: who, what, when, where, how?
- How to distribute authorities between GSAs and Management Areas
- How to distribute voting rights - per acre, by water use?
- Define private pumper role
- Chicken and Egg – a parallel process
 - Need for technical information to make governance decisions
 - Need governance to make decisions and fund technical studies
- Coordination with Glenn County and Butte Counties



Final Words on Groundwater Management under SGMA

Pooling resources and working together will provide efficiencies, reduce costs, and ensure long-term sustainable water supplies for agriculture, communities and domestic well owners.





Thank You Questions?

Mary Fahey
Water Resources Coordinator
Colusa County Department of Agriculture
Email: mfahey@countyofcolusa.org
Phone: 530.458.7709